

DRAWING NUMBER
52/192

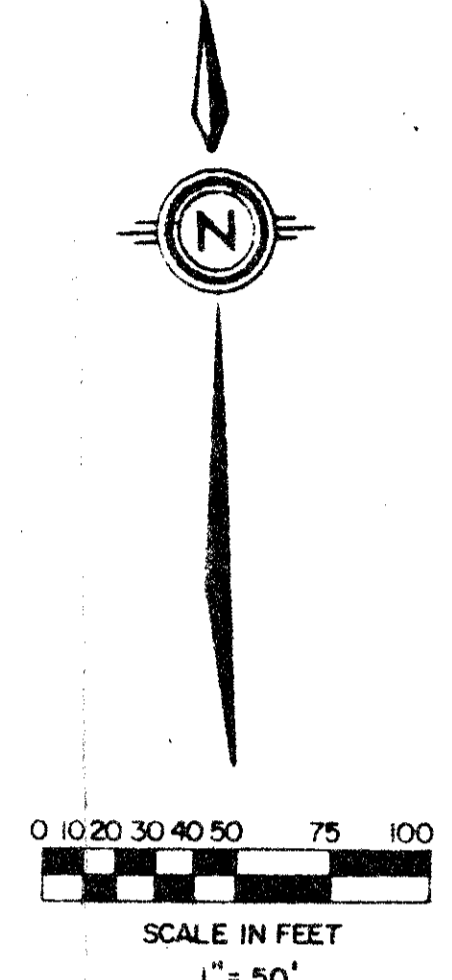
HOMES OF LEE'S CROSSING PLAT NO. 2

PART OF LEE'S CROSSING, A P.U.D.

SITUATE IN SECTION 34, TOWNSHIP 44 SOUTH, RANGE 42 EAST,
PALM BEACH COUNTY, FLORIDA, BEING A REPLAT OF A PORTION
OF LEE'S CROSSING PLAT NO. 2 (P.U.D.), AS IN PLAT BOOK 42,
PAGES 1 THROUGH 5.

SHEET 2 OF 2

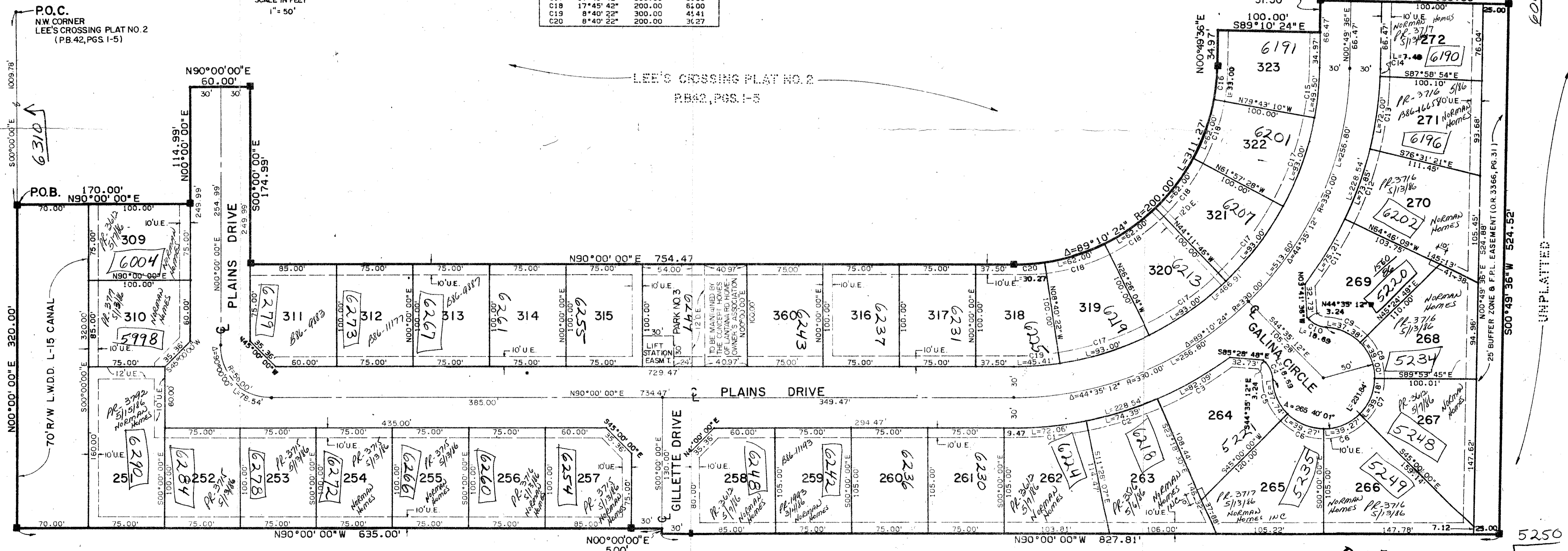
STATE OF FLORIDA
COUNTY OF PALM BEACH
THIS PLAT WAS FILED FOR
RECORD AT _____ DAY OF _____
AD. 1955 AND DULY RECORDED
IN PLAT BOOK _____ ON PAGES
_____ AND _____
JOHN B. DUNKLE, CLERK
CIRCUIT COURT
BY: _____, D.C.



NO	DELTA	RADIUS	LENGTH
C1	11°28' 07"	360.00	74.06
C2	11°50' 23"	360.00	74.39
C3	13°03' 54"	360.00	82.09
C4	42°50' 00"	25.00	14.69
C5	43°14' 48"	50.00	31.74
C6	45°00' 00"	50.00	35.27
C7	44°53' 45"	50.00	35.18
C8	44°41' 27"	50.00	35.00
C9	42°50' 00"	50.00	31.38
C10	42°50' 00"	25.00	14.69
C11	11°58' 09"	360.00	75.21
C12	11°45' 12"	360.00	75.85
C13	11°27' 33"	360.00	75.00
C14	1°11' 30"	360.00	7.48
C15	9°27' 14"	300.00	45.50
C16	9°27' 14"	200.00	31.00
C17	17°45' 42"	300.00	95.00
C18	17°45' 42"	200.00	62.00
C19	8°40' 22"	300.00	45.44
C20	8°40' 22"	200.00	31.27

3/4/42

SUBDIVISION + Homes of Lee's Crossing
BOOK S PAGE 192
FLOOD ZONE B FLOOD MAP + 170A
QUAD + 33 ZONING
SE ZIP CODE 33467
PUD NAME Lee's Crossing



APPROVED BY [Signature]
CHECKED BY [Signature]

P.U.D. TABULAR DATA

TOTAL ACREAGE	11.142 AC.
TOTAL UNITS	38
GROSS DENSITY	3.32 DU/AC
BUILDING COVERAGE	2.165 AC.
STREETS & UNCOVERED PARKING	2.229 AC.
WATER BODIES	0.417 AC.
PARKS	0.417 AC.
TOTAL OPEN SPACE	6.687 AC. 60%

TURNOUT REQUIRED (AREA 006)

0271-304

52/192

Meridian Surveying and mapping inc.
WEST PALM BEACH, FLORIDA

DRAWN M.E.H. DATE JUNE 1983
CHECKED SCALE 1" = 50'
DRAWING NO. 83-P-033

HOMES OF LEE'S CROSSING PLAT NO. 2
PART OF LEE'S CROSSING, A P.U.D.

DRAWING NUMBER

DRAWING NUMBER

DRAWING NUMBER

PLAN HOLD CORPORATION • IRVINE, CALIFORNIA
RECORDED BY NUMBER 07348